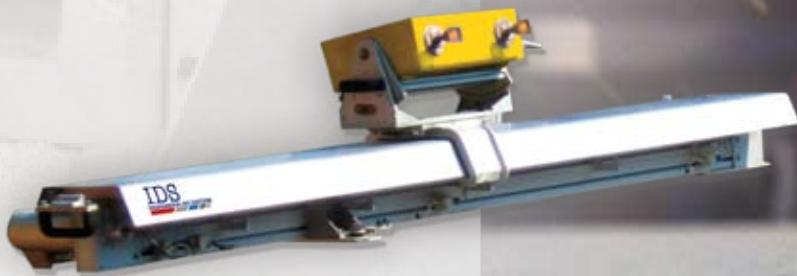


# ***IBIS-L: Preventing Natural and Man Made Disaster Utilizing Microwave Interferometry***

**IBIS-L**

**An innovative sensor for remote monitoring  
of slopes and structural movements**



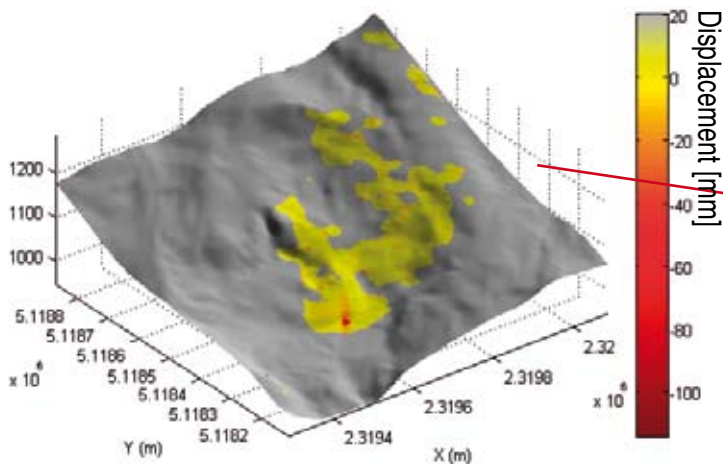
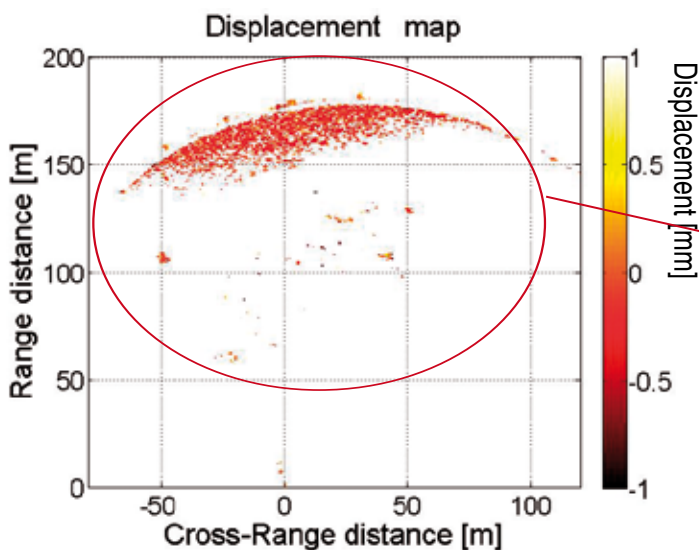
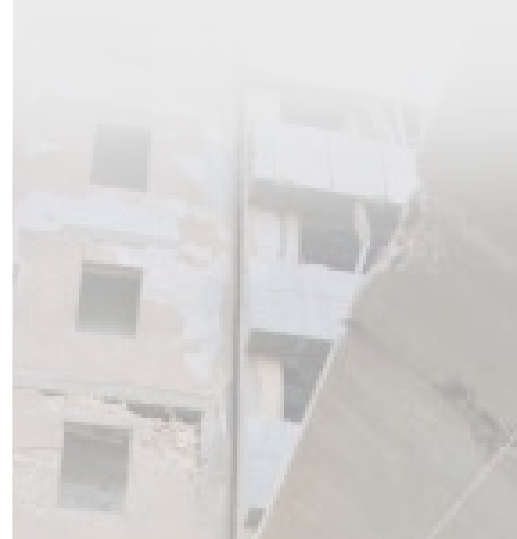
## Monitoring application:

### Terrain and environmental:

- Landslide and slopes
- Terrain subsidence
- Glaciers and avalanches
- Volcanoes

### Structural movement monitoring:

- Dam monitoring
- Building collapse hazards
- Cultural heritage monitoring



Map of the landslide displacements

## Advantages Over Traditional Techniques:

- Remote sensing of up to 4 km.
- Displacement accuracy up to 1/10 mm.
- Real-time two-dimensional mapping of simultaneous displacements over large areas (several km<sup>2</sup>)
- Sampling of movements every 5 minutes
- Autonomous operation
- Day-night, all weather operation



**IDS Ingegneria Dei Sistemi S.p.A.**

Pisa Branch Office  
 via Sterpulino 20, 56121 Pisa, Italy  
 tel. +39 050 9671 11  
 fax +39 050 9671 21

*For further information contact*

e-mail: sales.gpr@ids-spa.it  
 tel. +39 050 967123  
 www.idsgeoradar.com